

LA31



LA31 is a very quiet and powerful actuator designed for a variety of applications, such as those in furniture, care or rehabilitation fields; it is available with a wide range of options and safety protections.

Features:

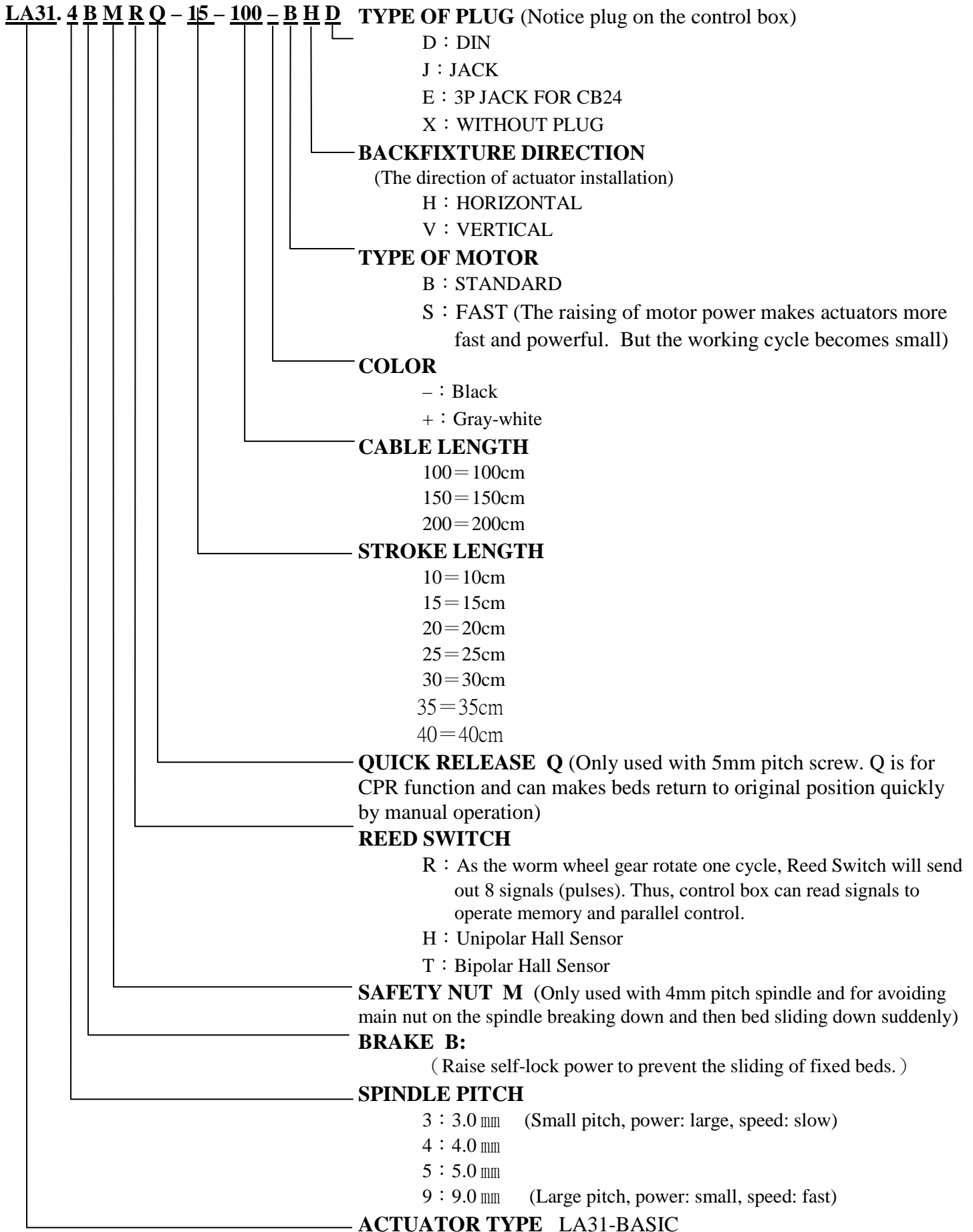
- 24V DC permanent magnet motor
- Thrust up to 6000N; Speed 3.0~16.7mm/s
- Built-in limited switches (not adjustable)
- High-strength plastic housing protects motor and gear
- Scratch and wear-resistant powder painted outer tube
- Strong wear and corrosion resistant stainless steel inner tube
- Elegant and compact design with small installation dimensions
- Steel piston rod eye
- Zinc alloy back fixture
- Duty cycle: Max. 10% or 2 min./ 18 min. in continuous use
- Ambient temperature: +5°C to +40°C
- Protection class: IP54
- Color: Black

Options:

- LA31 can be fitted with a brake for increasing self-lock effect
- Safety nut
- Protection class: IP66 (not for wash tunnels)
- Reed-Switch
- Quick-Release Q
- Back stretch sleeve fixture (For only Quick-Release function)
- 0.2/ 0.4m coiled cable with DIN or Jack plug
- Back fixture position 0° or 90°
- Steel groove piston rod eye
- Fast motor
- Color: Gray-White (Min. order: 1,000 pcs)
- Can install Hall Sensor function (Contact R & D department of LINKAN A/C first)

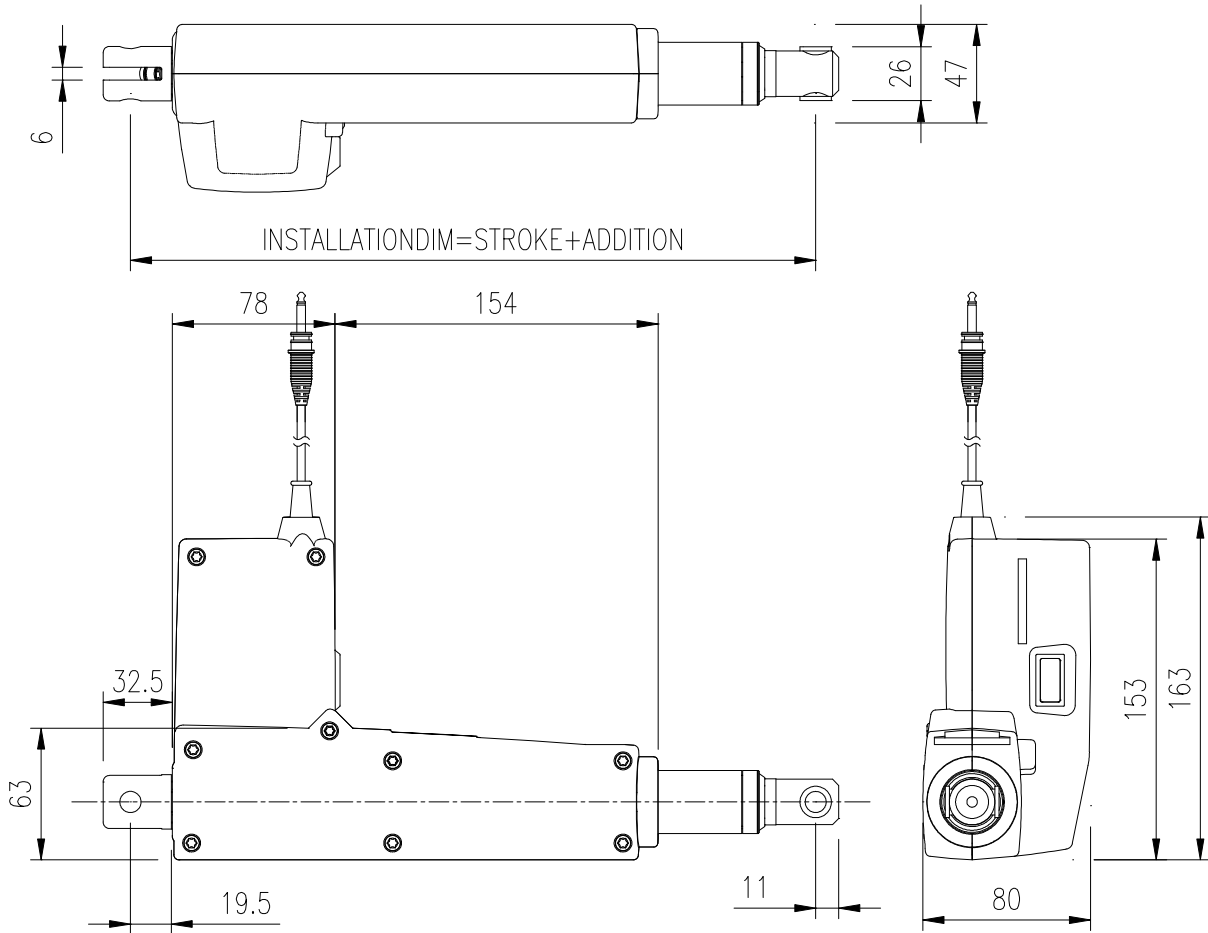


LA31 Ordering Example:



Specifications are subject to change without prior notice. It is the responsibility for the product users to determine the suitability of LINKAN A/C products for a specific application. LINKAN A/C will be responsible for replacing/ repairing defective products covered by the warranty if promptly returned to the factory. No liability is assumed beyond such replacement/ repair.

Dimensions:



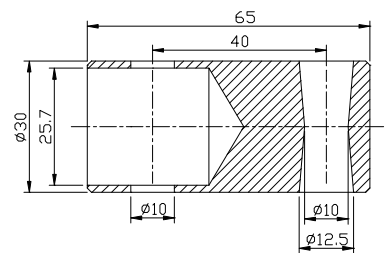
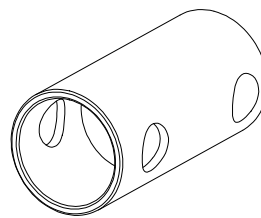
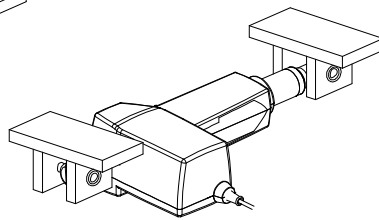
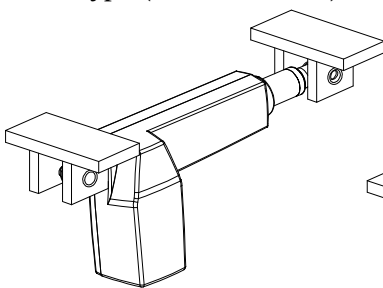
Back direction: (Direction of installation)

Option for Quick Release accessory

V type (Vertical install)

H type (Horizontal install)

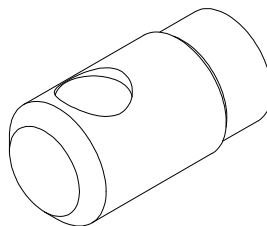
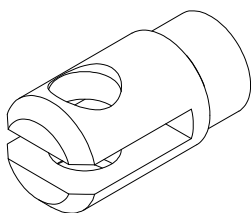
(Back stretch sleeve fixture)



Screw:

Groove

Not-Groove



Specifications are subject to change without prior notice. It is the responsibility for the product users to determine the suitability of LINKAN A/C products for a specific application. LINKAN A/C will be responsible for replacing/ repairing defective products covered by the warranty if promptly returned to the factory. No liability is assumed beyond such replacement/ repair.



Basic Installation Dimension :

Actuator Stroke mm	100	150	200	250	300
Basic Installation Stroke mm	288	323	373	423	473
Stretch Stroke mm	388	473	573	673	773

Installation Dimension for Q function :

Actuator Stroke mm	100	150	200
Basic Installation Stroke mm	377	427	477
Stretch Stroke mm	477	577	677

Notice (Installation):

- ★ If the stroke of LA31 is less than 100mm, all basic installation dimension are 288mm
- ★ When the load is over 4000N, the longest stroke of a actuator is 250mm
- ★ For a actuator equipped with Q function: basic installation dimension is Stroke + 277mm

Notice (for the installation of Q function)

- ★ The effective stroke length for Quick Release is:
Standard stroke length minus 10 mm
E.g. Actuator with quick release is equipped with 150mm stroke length. The effective stroke length for this type is ≤ 140 mm
- ★ When LA31 actuator equip Quick Release function, spindle need to be 5mm pitch. The needed released power of actuator is 35 kgs.
- ★ LA31 is not suitable for the pulling device. Suggestion: Actuator is suitable for the load in pushing situations.
- ★ Back stretch sleeve fixture is suggested for Quick Release function

Data & Graph:

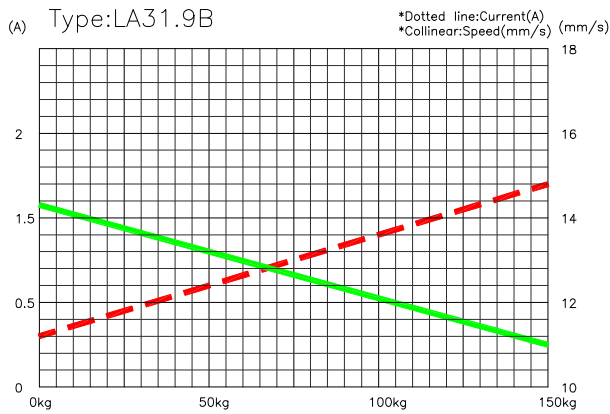
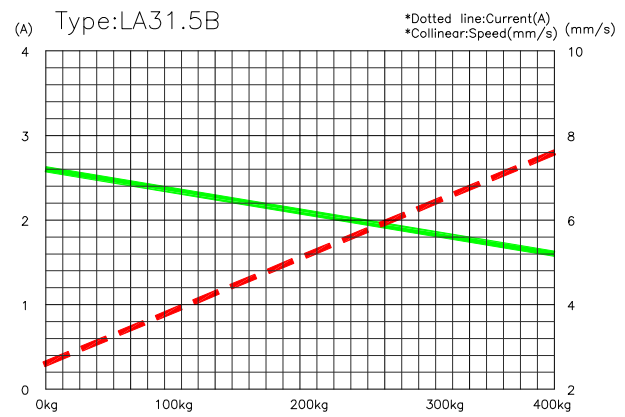
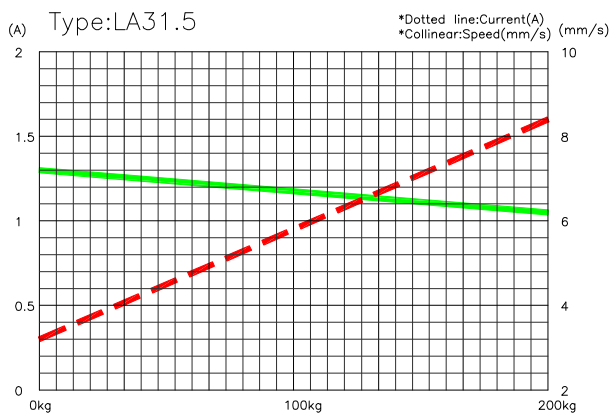
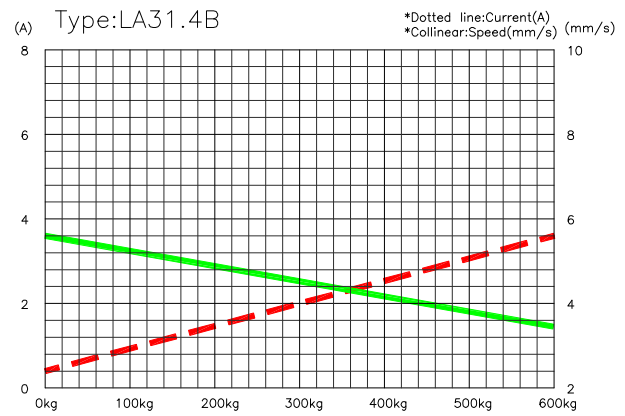
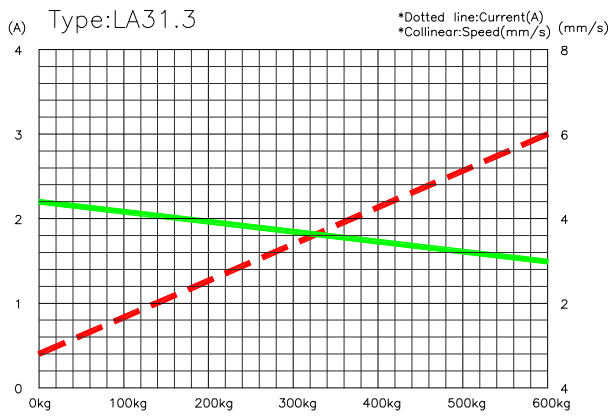
Power Supply: DC24V

Spindle type	Spindle Pitch (mm)	Max load [N]		Typical Amp.	Typical speed [mm/s]		Selflock Max [N]
		Push	Pull	Full load	Unloaded	Full load	Push
Standard 24V motor (Duty Cycle : 10%)							
LA31.3	3	6000	4000	3.0A	4.3	3.0	6000
LA31.4B	4	6000	4000	3.6A	5.8	3.4	6000
LA31.5	5	4000	4000	1.6A	7.2	6.2	2000
LA31.5Q	5	4000	2000	1.6A	7.2	6.2	2000
LA31.5B	5	4000	4000	2.8A	7.2	5.2	4000
LA31.9B	9	1500	1500	1.7A	14.3	11	1500
Fast 24V motor (Duty Cycle : 5%)							
LA31.3	3	6000	4000	4.0A	5.4	3.8	6000
LA31.4B	4	6000	4000	4.6A	7.5	4.8	6000
LA31.5	5	4000	4000	2.1A	9.0	7.9	2000
LA31.5B	5	4000	4000	3.5A	9.0	6.7	4000
LA31.9B	9	1500	1500	2.5A	16.7	14.3	1500

※The data above is with DC24V power supply. If you need the data with compatible control boxes, please contact LINKAN A/C technical department.

Specifications are subject to change without prior notice. It is the responsibility for the product users to determine the suitability of LINKAN A/C products for a specific application. LINKAN A/C will be responsible for replacing/ repairing defective products covered by the warranty if promptly returned to the factory. No liability is assumed beyond such replacement/ repair.

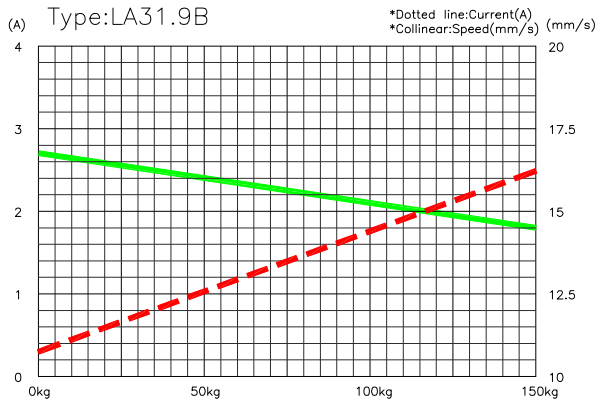
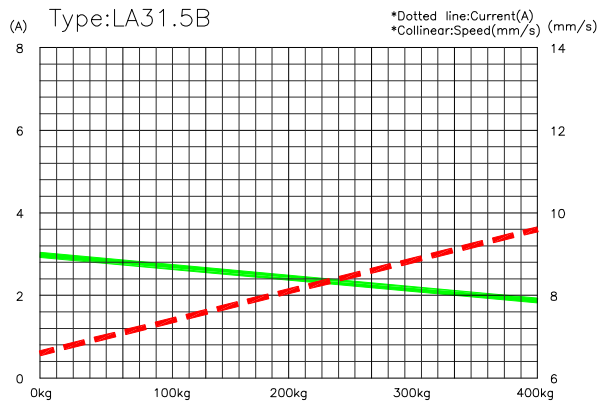
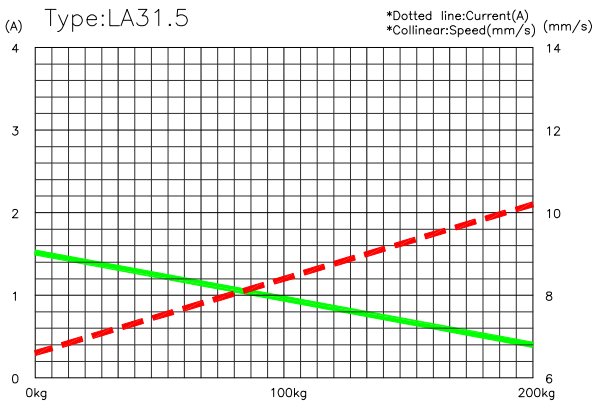
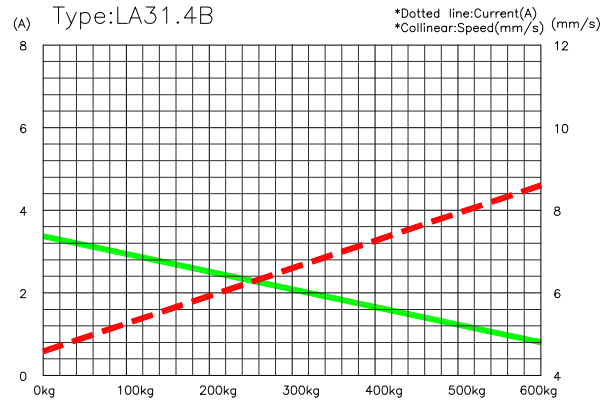
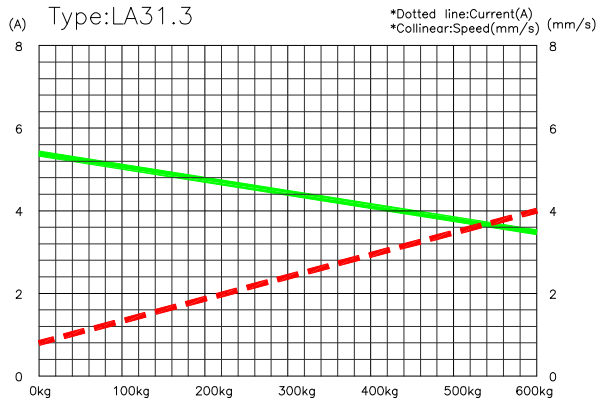
Standard 24V motor :



Specifications are subject to change without prior notice. It is the responsibility for the product users to determine the suitability of LINKAN A/C products for a specific application. LINKAN A/C will be responsible for replacing/ repairing defective products covered by the warranty if promptly returned to the factory. No liability is assumed beyond such replacement/ repair.



Fast 24V motor :



Specifications are subject to change without prior notice. It is the responsibility for the product users to determine the suitability of LINKAN A/C products for a specific application. LINKAN A/C will be responsible for replacing/ repairing defective products covered by the warranty if promptly returned to the factory. No liability is assumed beyond such replacement/ repair.